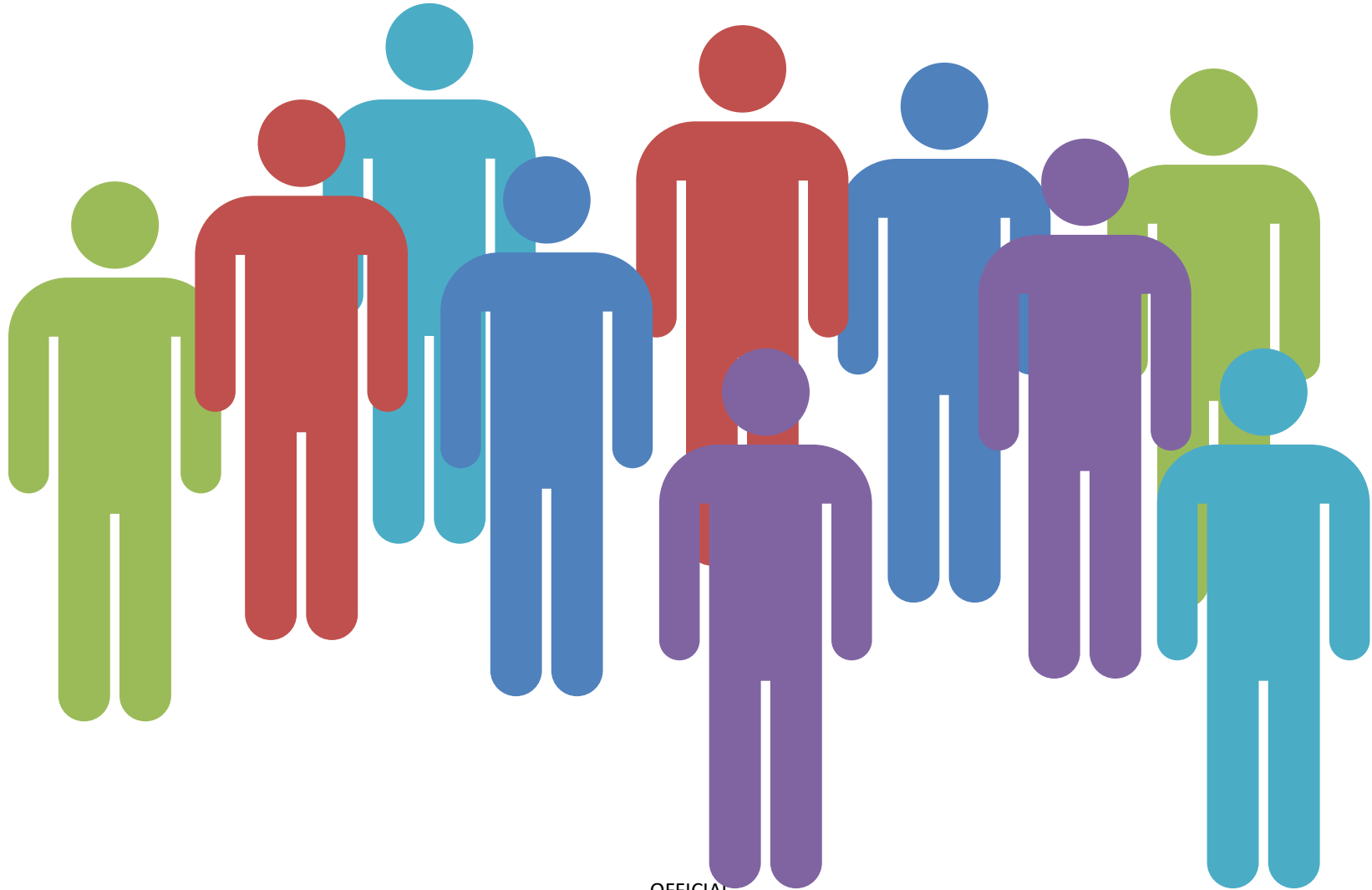


Victorian Virtual ED

Dr Loren Sher
Program Director of the VVED
2022







OFFICIAL



[This Photo](#) by Unknown Author is licensed under [CC BY-NC-ND](#)



[This Photo](#) by Unknown Author is licensed under [CC BY-ND](#)









Welcome to the Victorian Virtual Emergency Department (VVED), a public health service to treat non-life-threatening emergencies.

Please enter the VVED according to the category which best represents you.

Are you a
patient?



Click here

Are you from
Ambulance Victoria?



Click here

Are you a
General Practitioner?



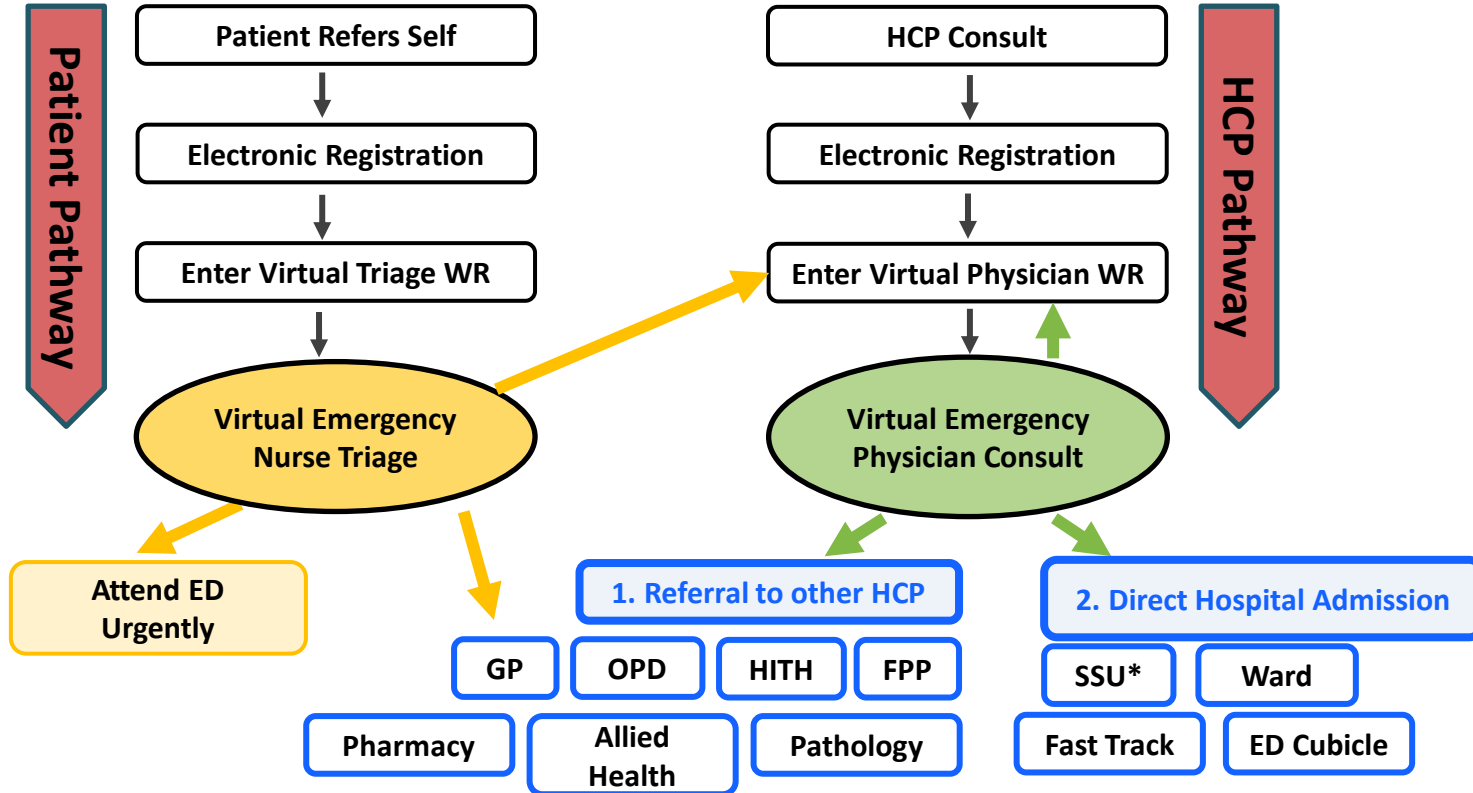
Click here

Are you a
Healthcare Professional?

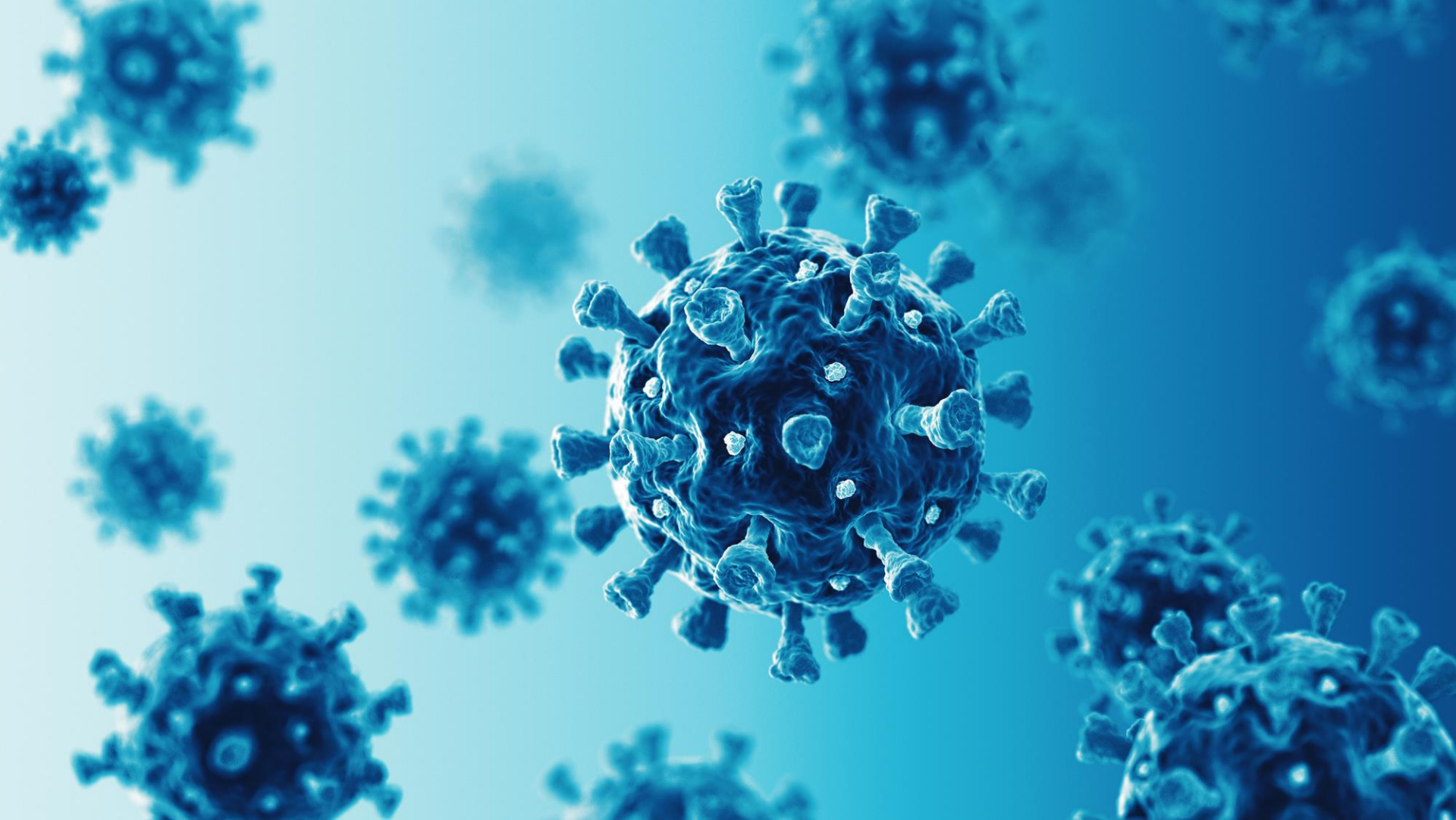


Click here

VVED Care Pathways

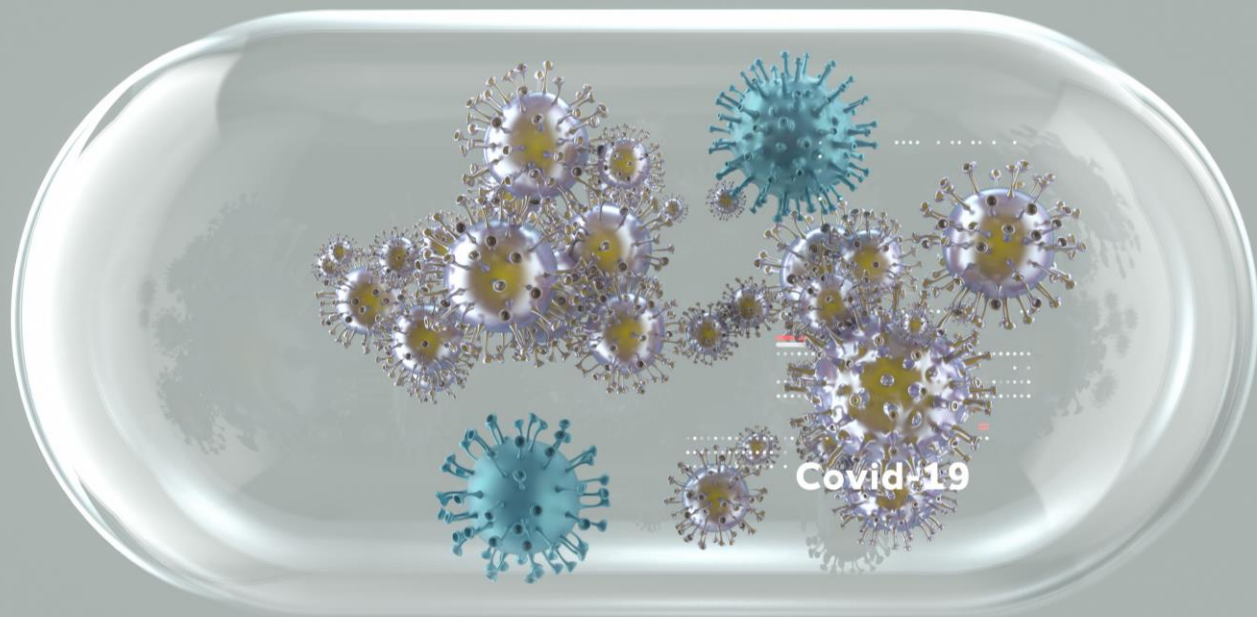


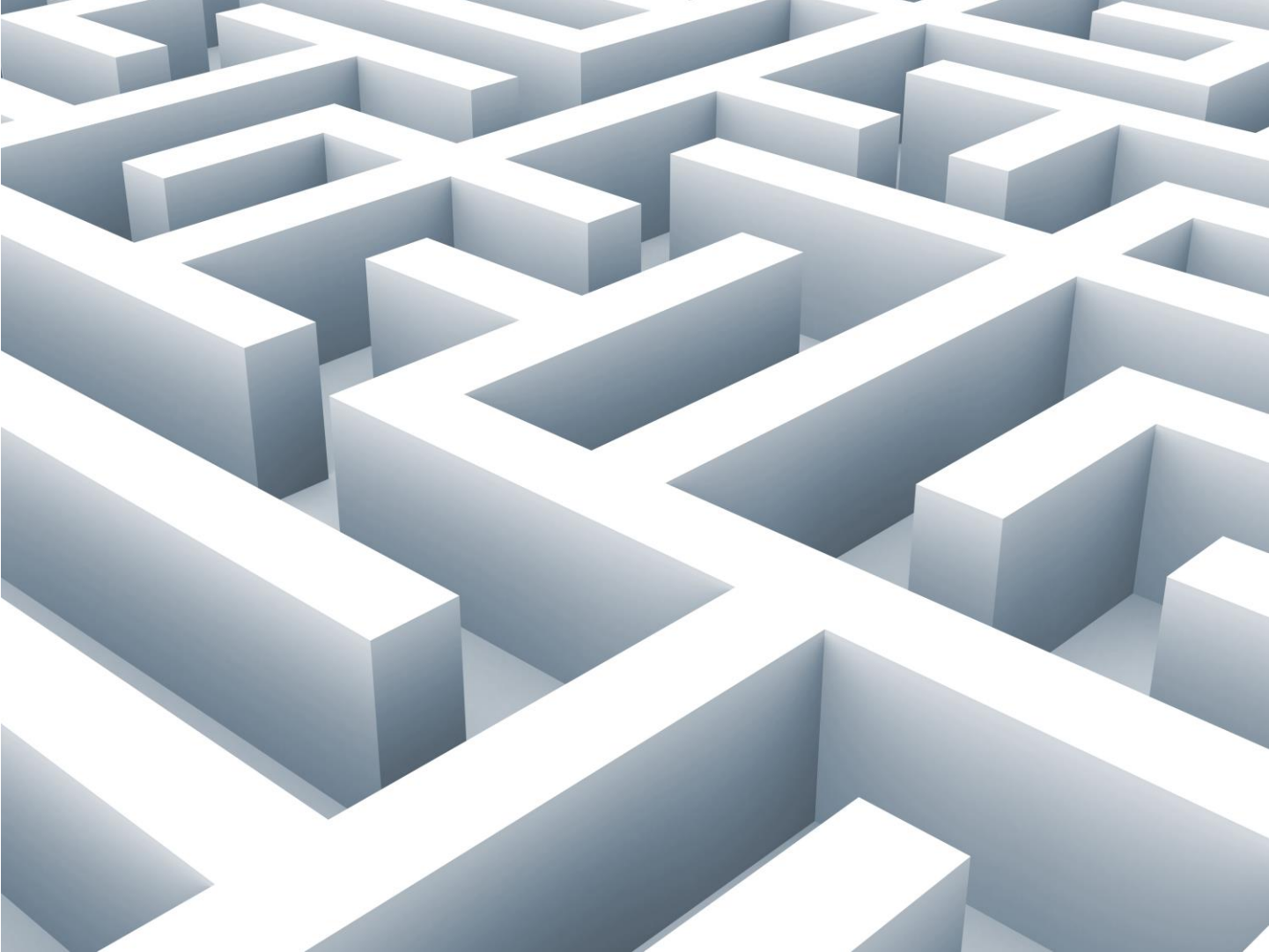














OFFICIAL



Current State

- Statewide funding from Feb 2022
- Averaging 250 pts a day
 - 65 000 Patients
 - 19 300 AV/ AV RACF/ RACER
 - Overall 70% Diversion rate
- Service runs 24/7



Future Projects

- Diabetes
- Paediatrics
 - NOC
 - Review

