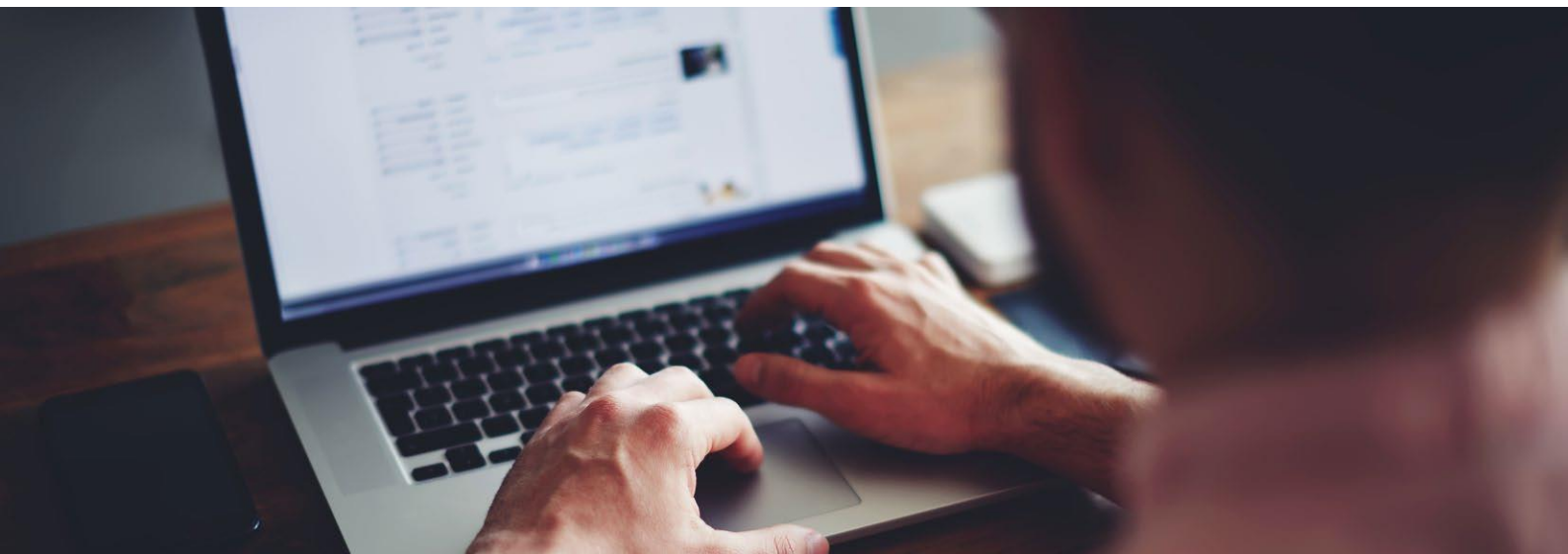


2021.1 KFP pre-exam online workshop series



Preparing for the KFP

This two-part, online series will assist in preparing GP registrars and practice eligible candidates enrolled in the 2021.1 for the Key Feature Problems (KFP) component of the RACGP Fellowship examinations.

The workshop provides candidates with the opportunity to practice exam questions in a timed environment, discuss answers, and ask questions under the guidance RACGP medical educators. The 11 cases used in this series will be the same cases as the usual face-to-face workshops.

Dates & Times

Refer to session overview on next page

Sessions listed in AEDT VIC/NSW timezone

Format

Zoom webinar

Cost

\$220.00

Capacity

Each series is limited to 40 attendees, early registration is encouraged

Contact

Jessica Fry

Tel 1800 472 247

Email examinations@racgp.org.au

Program

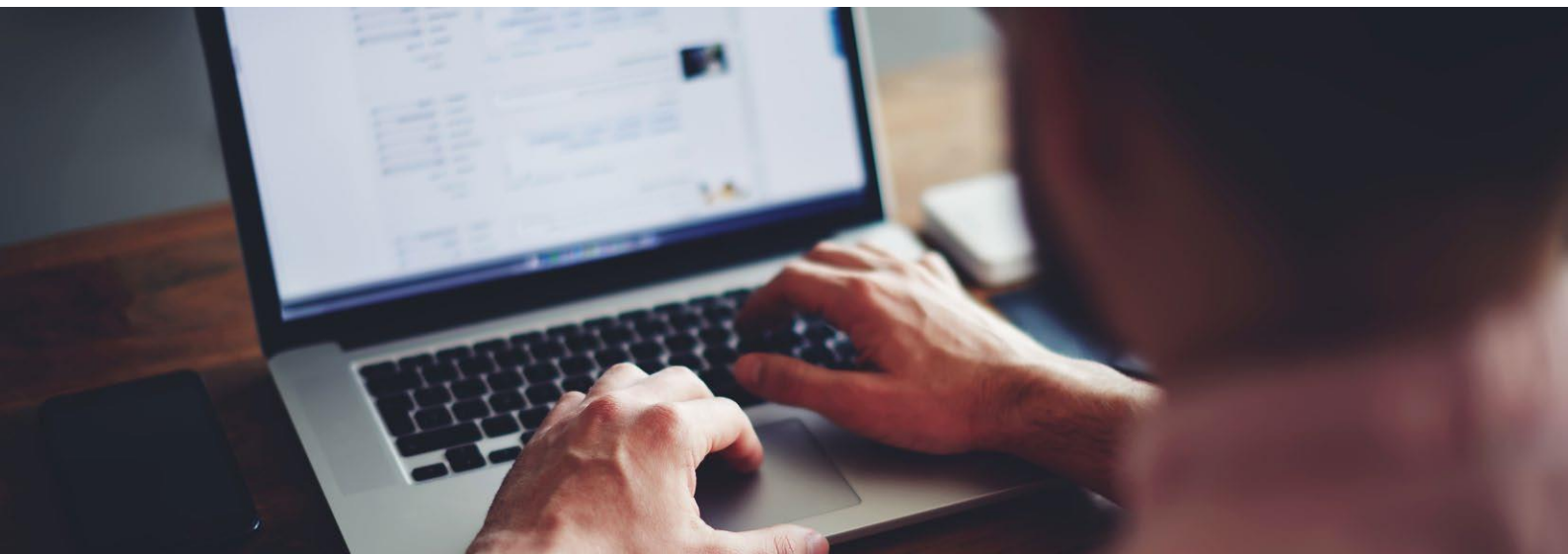
- KFP presentation – the importance of clinical reasoning
- KFP practice cases – candidates will complete each case under timed conditions, followed by discussion of answers
- Overview of the KFP exam and advice on how to prepare

Important information

- Completion of the KFP - Exam Support Online (ESO) modules are a prerequisite for attendance. The modules are complimentary for candidates and available via [gplearning](https://www.racgp.org.au/learning)
- This is a live and interactive course. It is not recorded and you will not be able to access materials at a later date.
- These workshops will be delivered via 'Zoom' You will receive a separate link for each of the two parts. Please ensure you have downloaded 'Zoom' prior to the workshop.

Registration open - Available dates listed on the page 2





Session dates	Time Please check your local time zone					Register
	VIC/NSW ADST	SA ACDT	QLD AEST	NT ACST	WA AWST	
Part 1: Monday 11 Jan Part 2: Monday 18 Jan	7.30 – 9.30pm	7.00 – 9.00pm	6.30 – 8.30pm	6.00 – 8.00pm	4.30 – 6.30pm	Register now
	8.00 – 10.00pm	7.30 – 9.30pm	7.00 – 9.00pm	6.30 – 8.30pm	5.00 – 7.00pm	Register now
Part 1: Tuesday 12 Jan Part 2: Tuesday 19 Jan	7.00 – 9.00pm	6.30 – 8.30pm	6.00 – 8.00pm	5.30 – 7.30pm	4.00 – 6.00pm	Register now
Part 1: Wednesday 13 Jan Part 2: Wednesday 20 Jan	7.00 – 9.00pm	6.30 – 8.30pm	6.00 – 8.00pm	5.30 – 7.30pm	4.00 – 6.00pm	Register now
Part 1: Thursday 14 Jan Part 2: Thursday 21 Jan	7.30- 9:30pm	7.00 – 9.00pm	6.30 – 8.30pm	6.00 – 8.00pm	4.30 – 6.30pm	Register now
	10.00pm - 12.00am	9.30 – 11.30pm	9.00 – 11.00pm	8.30 – 10.30pm	7.00 – 9.00pm	Register now